

VINYL WALLCOVERINGS ON WOVEN TEXTILE BACKING



IGI - the Global Wallcoverings Association, is a world-wide not-for-profit organisation with the mission to achieve and maintain best business practises within our membership by providing a forum for discussion, disseminating information, and representing the industry before government and standards bodies in order to facilitate the establishment and the promotion of industry standards.

Members are encouraged to improve the quality of their products, services and processes throughout each company, with an emphasis on sustainable growth through sound environmental principles, and to demonstrate a high amount of responsibility for society and the environment.

IGI members are committed to cooperation in addressing common goals and issues such as ethical practices, quality standards, functionality, and innovation, with a focus on sustainability and environmental protection. We are undertaking the publication of EPD's to demonstrate this commitment.



Vinyl based wallcovering on textile backing is a wallcovering using a woven textile base. The textile base (scrim) can be cotton or a polyester-cotton blend.



*Registered under the scope
of mutual recognition between
UL Environment and
Institut Bauen und Umwelt e.V.*



ENVIRONMENTAL PRODUCT DECLARATION



IGI - The Global Wallcoverings Association
Vinyl wallcoverings on woven textile backing


According to EN 15804 and ISO 14025
Dual Recognition by UL Environment and Institut Bauen und Umwelt e.V.

This declaration is an environmental product declaration (EPD) in accordance with ISO 14025. EPDs rely on Life Cycle Assessment (LCA) to provide information on a number of environmental impacts of products over their life cycle. Exclusions: EPDs do not indicate that any environmental or social performance benchmarks are met, and there may be impacts that they do not encompass. LCAs do not typically address the site-specific environmental impacts of raw material extraction, nor are they meant to assess human health toxicity. EPDs can complement but cannot replace tools and certifications that are designed to address these impacts and/or set performance thresholds – e.g. Type 1 certifications, health assessments and declarations, environmental impact assessments, etc. Accuracy of Results: EPDs regularly rely on estimations of impacts, and the level of accuracy in estimation of effect differs for any particular product line and reported impact. Comparability: EPDs are not comparative assertions and are either not comparable or have limited comparability when they cover different life cycle stages, are based on different product category rules or are missing relevant environmental impacts. EPDs from different programs may not be comparable.



PROGRAM OPERATOR	UL Environment
DECLARATION HOLDER	IGI - The Global Wallcoverings Association
ULE DECLARATION NUMBER	4788355787.103.1
IBU DECLARATION NUMBER	EPD-IGI-20170144-IBG1-EN
DECLARED PRODUCT	Vinyl wallcoverings on woven textile backing
REFERENCE PCR	Product Category Rules Part A: Calculation Rules for the Life Cycle Assessment and Requirements on the Background Report, 08.2016 Product Category Rules Part B: Wall coverings, 09.2016

DATE OF ISSUE	February 5, 2018
PERIOD OF VALIDITY	5 years

CONTENTS OF THE DECLARATION	General information Product / Product description LCA calculation rules LCA scenarios and further technical information LCA results References	
The PCR review was conducted by:	IBU – Institut Bauen und Umwelt e.V. PCR was approved by the Independent Expert Committee (IEC) of IBU	
The CEN Norm EN 15804 serves as the core PCR. This declaration was independently verified in accordance with ISO 14025 by Underwriters Laboratories <input type="checkbox"/> INTERNAL <input checked="" type="checkbox"/> EXTERNAL	 Grant R. Martin, UL Environment	
This life cycle assessment was independently verified in accordance with EN 15804 and the reference PCR by:	IBU – Institut Bauen und Umwelt e.V.	

This EPD conforms with EN 15804



1. General Information

Participating companies:

A.S. Création Tapeten AG (DE), Anstey Wallpaper Co. Ltd (GB), J. Josephson Inc. (US), Len-Tex Corporation (US), LSI Wallcovering (US), Muraspec Decorative Solutions Ltd. (GB), Roysons Corporation (US), Sirpi S.p.A. (IT), York Wallcoverings Inc. (US)

Programme holder

IBU - Institut Bauen und Umwelt e.V.
Panoramastr. 1
10178 Berlin
Germany

Declaration number

EPD-IGI-20170144-IBG1-EN

This Declaration is based on the Product Category Rules:

Wall coverings, 09.2016
(PCR tested and approved by the SVR)

Issue date

11.12.2017

Valid to

10.12.2022



Prof. Dr.-Ing. Horst J. Bossenmayer
(President of Institut Bauen und Umwelt e.V.)



Dr. Burkhard Lehmann
(Managing Director IBU)

Vinyl wallcoverings on woven textile backing

Owner of the Declaration

IGI - The Global Wallcoverings Association
Chaussée de Louvain 426
1380 LASNE - Belgium

Declared product / Declared unit

The declared unit is 1m² (square metre) decorative vinyl based wallcovering on woven textile backing including packaging.

Scope:

This EPD focusses on the production, transport and disposal of a weighted average of 1m² vinyl wallcoverings on woven textile backing of participating members of the IGI - The Global Wallcoverings Association.

Non-decorative wallcoverings for a later additional treatment like painting ("whites") are included in this scope as they follow a worst case approach.

9 out of 67 IGI-members are involved in this EPD. The EPD is valid only for those companies.

The technical properties are displayed in chapter 2.3. The owner of the declaration shall be liable for the underlying information and evidence; the IBU shall not be liable with respect to manufacturer information, life cycle assessment data and evidences.

Verification

The CEN Norm /EN 15804/ serves as the core PCR

Independent verification of the declaration according to /ISO 14025/

internally externally



Prof. Dr. Birgit Grahl
(Independent verifier appointed by SVR)

2. Product

2.1 Product description / Product definition

Vinyl based wallcovering on textile backing is a wallcovering according to /EN 15102/ using a woven textile base. The textile base (scrim) can be cotton or a polyester-cotton blend. When the wallcovering is to be changed it can be stripped in its entirety by peeling the wallcovering lengths from the wall. This property as defined in /EN 235/ is strippable.

For the placing on the market of the product in the EU/EFTA (with the exception of Switzerland) Regulation (EU) No. 305/2011 (CPR) applies. The product needs a Declaration of Performance taking into consideration /EN 15102/ and CE-marking.

For the application and use the respective national provisions apply.

For the placing on the market in the USA the product should conform to /ASTM F 1141 – 93/ Standard Specification for Wallcovering and /ASTM F 793 – 06/ Standard Classification of Wall Covering by Use Characteristics.

Or:

Wallcoverings Association /WA-101/ Quality Standard for Polymer coated Fabric Wallcovering.

2.2 Application

Wallcoverings are used for the decorative wall design of interior spaces in private or commercial use.

2.3 Technical Data

Constructional data

In accordance with /EN 233/, the following technical (structural) data can be declared on delivery:*

Name	Value	Unit
Measures by categories /EN 233/	category 1 - 3	-
Straightness and parallelism according to /DIN EN 12956/	< 1	-
Washability according to /EN 12956/	extra-scrubbable	-
Colour fastness to light according to /EN ISO 105-B02/	6	-
Migration of heavy metals and certain other elements to /EN 12149/	fulfills the norm	-
Vinyl chloride monomer (VCM) content max. < 0,2 mg/m ² according to /EN 12149/	fulfills the norm	-
Emissions of formaldehyde max. < 120 mg/kg according to /EN 12149/	fulfills the norm	-

In case of multiple answers, values need to be examined depending on the manufacturer.

For USA manufactured products should be in accordance with /ASTM F 793-0-06/ Table 1 Classification Criteria.

Or:

/Wallcoverings Association WA-101/ Table 1 Physical Test Requirements.

Depending on whether products are intended for the European or US market, the following performance data must be declared.

1a: Product according to the /CPR/, based on /EN 15102/:

Performance data of the product in accordance with the Declaration of Performance with respect to its Essential Characteristics according to /EN 15102/

or:

1b

Performance Category I, II, III, IV, V or VI as described in Table 1 of /F 793-0-06/ should be declared.

Or:

Compliance with Wallcoverings Association /WA-101/ Type I, II or III should be declared.

2.4 Delivery status

The products declared are provided within the following dimensions:

Width metres		Length metres	
Min.	Max.	Min.	Max.
0.14	1.50	1.00	150.00

This table contains the range of all wallcoverings examined. For more precise information please contact the specific manufacturer.

2.5 Base materials / Ancillary materials

The weighted average of the primary product components is shown in the following table, in percentage:

Name	Value	Unit
Cotton	6	%
PET	2	%
PVC Plastisol	53	%
Ink	5	%
Chemicals and auxiliary materials	16	%
Packaging	18	%
Sum	100	%

Pallets were considered as part of the packaging.

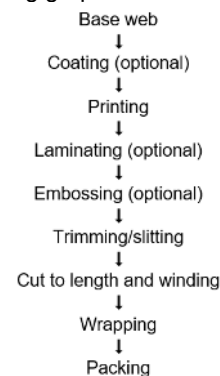
It cannot be ruled out that individual wallcoverings may contain small amounts of substances that are included in the SVHC candidate list. This can be attributed, for example, to the contents of used waste paper.

Depending on the manufacturer and wallcoverings, different flame retardants, biocides and plasticizers can be used.

Further information can be obtained from the respective manufacturer.

2.6 Manufacture

The manufacturing process can be described with the help of the following graphic:



The order of manufacture may change and can slightly deviate for different producers.

2.7 Environment and health during manufacturing

Compliance with statutory health and safety for personnel is ensured. Further, the energy and environmental management is certified for some members according to /ISO 14001/ and /ISO 50001/.

For greater detail please contact the specific Manufacturer.

2.8 Product processing/Installation

Depending on the manufacturers suggestion, the adhesive is applied to the back of the wallcovering or the substrate using a wallpaper brush or short-napped roller. The wallcovering is pressed against the wall and is cut along the top and bottom edge to fit the wall.

2.9 Packaging

Product is wrapped in polyolefin film, packed in corrugated cardboard boxes and palletised.

2.10 Condition of use

There are no special features to be noted within the limits of normal and customary usage.

2.11 Environment and health during use

No environmental problems can be expected when the product is handled and used properly.

2.12 Reference service life

Given the wallcovering is professionally installed, the reference service life is 15 years according to experience values.

2.13 Extraordinary effects

Fire

The fire performance according to /EN 13501/ is shown in the following table:*

Fire protection

Name	Value
Building material class	B-D
Burning droplets	s1-s3
Smoke gas development	d0-d2

*This table contains the range of all wallcoverings examined. For more precise information please contact the specific manufacturer.

For USA information on fire performance according to /ASTM E 84/ Test method for Surface Burning Characteristics of Building Materials.

Water

Product is not water resistant. There is no risk of a hazardous environmental impact in the event of water flooding.

Mechanical destruction

There is no risk of a hazardous environmental impact following unforeseen mechanical destruction.

2.14 Re-use phase

Product is not re-usable.

2.15 Disposal

Wallcoverings are subject to the waste code 170904 (mixed construction and demolition waste other than those mentioned in 170901, 170902 and 170903) in accordance with the /European Waste Catalogue/ (/EWC/).

Wallcoverings can therefore be disposed of as normal household waste, that is in the dustbin or in additional refuse sacks. Used wallcoverings should not be placed in the waste paper bank. Most household waste is incinerated or landfilled depending on regional legal regulations in the EU or in the US.

2.16 Further information

For further information please visit www.igiwallcoverings.org.

3. LCA: Calculation rules

3.1 Declared Unit

The declared unit is 1 m² of wallcovering including packaging. The model shows a weighted average based on data (including produced square metres) from the participating manufacturers.

Declared unit

Name	Value	Unit
Declared unit	1	m ²
Grammage	0.493	kg/m ²
Conversion factor to 1 kg	2.028	-

3.2 System boundary

Type of the EPD: cradle to gate - with option.
The EPD is considered as a declaration of an average product as calculated from the output of several manufacturers (2b).

Module A1-3, A4 and A5

The product stage begins with the consideration of the production of the necessary raw materials and energies including all corresponding upstream processes as well as transport. Furthermore, the entire production phase was investigated, including the treatment of production waste until reaching the end-of-waste status (EoW). In addition, distribution transport and installation in the building were taken into account.

Module C2-4

The modules include the environmental impacts of the waste treatment until reaching the end-of-waste status (EoW) including the associated transport at the end of the product life cycle.

Module D

Calculation of potential benefits through the generated energy (electric & thermic) by the incineration processes in the life cycle stages in A5 C3 and C4. The burdens resulting from the waste-to-energy plants are assigned in module C3 or C4 in case of landfill gas combustion.

3.3 Estimates and assumptions

Most solvents were modelled as a generic mix of solvents.

Even though this EPD is also valid for 'whites', they are not part of the average which is responsible for the results in chapter 5. 'Whites' are not decorative wallcoverings yet, because there is a final production step (e.g. painting) missing. As a result, 'whites' have less environmental impact than comparable decorative wallcoverings with similar weights.

3.4 Cut-off criteria

Some materials that contributes less than 0,2% to the total weight of the average wallcovering were cut off. This is about 1% of the total Input mass. No energy consumption was neglected.

3.5 Background data

For modeling the lifecycle, the software system for holistic balancing /GaBi/ was used. All background data records relevant for production and disposal were almost exclusively taken from various GaBi supplementary databases. Rarely, the /ecoinvent/ (v.2.2) database were taken. The data records included in the databases are documented online.

3.6 Data quality

Data collection for the investigated products was carried out on the basis of evaluations of the internal production and environmental data, the collection of LCA-relevant data within the supply chain as well as through the measurement of relevant energy supply data. The collected data were checked for plausibility and consistency. A good representation is to be assumed.

The data were collected in 2016 and refer to the calendar year 2015.

3.7 Period under review

The LCA data were collected for the calendar year 2015.

3.8 Allocation

Potential benefits resulting from the thermal utilization of the packaging waste (module A5) as well as from the energetic utilization of the wallcoverings at the end of life (module C3) are allocated to module D.

3.9 Comparability

Basically, a comparison or an evaluation of EPD data is only possible if all the data sets to be compared were created according to /EN 15804/ and the building context, respectively the product-specific characteristics of performance, are taken into account.

4. LCA: Scenarios and additional technical information

Transport to the building site (A4)

Name	Value	Unit
Truck transport	27	t payload
Transport distance	445	km
Train transport	726	t payload
Transport distance	7	km
Ship transport	27500	dwt payload
Transport distance	261	km
Cargo plane transport	65	t payload
Transport distance	47	km
Capacity utilisation (including empty runs)	80 - 90	%

Because many different countries are involved, there were always global data sets used to model the transport distances.

Reference service life

Name	Value	Unit
Reference service life	15	a

End of life (C1-C4)

Name	Value	Unit
Energy recovery	3	%
Landfilling	97	%

For the calculation of this LCA landfilling is chosen for the US and incineration for the EU. Different disposal routes are available but not taken into account for this industry average LCA.

Reuse, recovery and/or recycling potentials (D), relevant scenario information

In module D the potential benefits of the thermal combustion from the wallcoverings (C3), their packaging (A5) as well as the incineration of landfill gases (C4) are displayed.

5. LCA: Results

In this section, the LCA results for 1 m² wallcoverings are presented. It should be borne in mind that the LCA results only indicate possible effects.

Indicators used for evaluation:

The CML (Centrum voor Milieukunde) methodology with the characterization factors in version 2001 - April 2013 is used to evaluate the possible environmental effects of the wallcoverings. The following impact categories are evaluated:

Global warming potential (**GWP**), Degradation potential of the stratospheric ozone layer (**ODP**), Acidification potential of soil and water (**AP**), Eutrophication potential (**EP**), Photochemical ozone creation potential (**POCP**), Potential for abiotic degradation of non-fossil resources (**ADPE**), Potential for abiotic degradation of fossil fuels (**ADPF**)

The fresh water consumption corresponds to the "Blue Water" consumption according to "The Water Footprint Assessment Manual, 2011".

DESCRIPTION OF THE SYSTEM BOUNDARY (X = INCLUDED IN LCA; MND = MODULE NOT DECLARED)

PRODUCT STAGE			CONSTRUCTION PROCESS STAGE		USE STAGE							END OF LIFE STAGE				BENEFITS AND LOADS BEYOND THE SYSTEM BOUNDARIES
Raw material supply	Transport	Manufacturing	Transport from the gate to the site	Assembly	Use	Maintenance	Repair	Replacement	Refurbishment	Operational energy use	Operational water use	De-construction demolition	Transport	Waste processing	Disposal	Reuse-Recovery-Recycling-potential
A1	A2	A3	A4	A5	B1	B2	B3	B4	B5	B6	B7	C1	C2	C3	C4	D
X	X	X	X	X	MND	MND	MNR	MNR	MNR	MND	MND	MND	X	X	X	X

RESULTS OF THE LCA - ENVIRONMENTAL IMPACT: 1m² vinyl wallcoverings on woven textile backing

Parameter	Unit	A1-A3	A4	A5	C2	C3	C4	D
GWP	[kg CO ₂ -Eq.]	1.53E+0	9.53E-2	3.35E-2	2.79E-3	3.92E-3	7.51E-2	-7.52E-3
ODP	[kg CFC11-Eq.]	4.40E-9	3.09E-14	1.37E-14	2.27E-15	8.75E-12	6.09E-14	-2.25E-13
AP	[kg SO ₂ -Eq.]	5.18E-3	3.35E-4	2.00E-5	1.71E-5	1.33E-5	7.67E-5	-1.59E-5
EP	[kg (PO ₄) ³ -Eq.]	9.38E-4	6.91E-5	1.90E-5	4.35E-6	9.16E-7	1.17E-4	-1.54E-6
POCP	[kg ethene-Eq.]	4.85E-4	5.59E-6	6.07E-6	-7.56E-6	3.71E-7	2.03E-5	-1.23E-6
ADPE	[kg Sb-Eq.]	4.25E-6	3.74E-9	1.16E-9	2.53E-10	2.80E-9	5.30E-9	-2.12E-9
ADPF	[MJ]	2.94E+1	1.32E+0	8.01E-2	3.85E-2	1.76E-2	3.60E-1	-9.44E-2

Caption: GWP = Global warming potential; ODP = Depletion potential of the stratospheric ozone layer; AP = Acidification potential of land and water; EP = Eutrophication potential; POCP = Formation potential of tropospheric ozone photochemical oxidants; ADPE = Abiotic depletion potential for non-fossil resources; ADPF = Abiotic depletion potential for fossil resources

RESULTS OF THE LCA - RESOURCE USE: 1m² vinyl wallcoverings on woven textile backing

Parameter	Unit	A1-A3	A4	A5	C2	C3	C4	D
PERE	[MJ]	2.81E+0	1.27E-2	6.41E-1	1.99E-3	7.69E-2	5.27E-1	-3.03E-2
PERM	[MJ]	1.21E+0	0.00E+0	-6.35E-1	0.00E+0	-7.41E-2	-4.99E-1	0.00E+0
PERT	[MJ]	4.02E+0	1.27E-2	6.02E-3	1.99E-3	2.88E-3	2.78E-2	-3.03E-2
PENRE	[MJ]	1.67E+1	1.32E+0	2.18E+0	3.87E-2	1.02E-1	1.29E+1	-1.29E-1
PENRM	[MJ]	1.47E+1	0.00E+0	-2.10E+0	0.00E+0	-8.21E-2	-1.25E+1	0.00E+0
PENRT	[MJ]	3.14E+1	1.32E+0	8.31E-2	3.87E-2	1.97E-2	3.75E-1	-1.29E-1
SM	[kg]	2.62E-2	0.00E+0	0.00E+0	0.00E+0	0.00E+0	0.00E+0	0.00E+0
RSF	[MJ]	0.00E+0	0.00E+0	0.00E+0	0.00E+0	0.00E+0	0.00E+0	0.00E+0
NRSF	[MJ]	0.00E+0	0.00E+0	0.00E+0	0.00E+0	0.00E+0	0.00E+0	0.00E+0
FW	[m ³]	5.63E-2	2.45E-5	1.47E-5	3.68E-6	4.65E-5	8.99E-6	-4.32E-5

Caption: PERE = Use of renewable primary energy excluding renewable primary energy resources used as raw materials; PERM = Use of renewable primary energy resources used as raw materials; PERT = Total use of renewable primary energy resources; PENRE = Use of non-renewable primary energy excluding non-renewable primary energy resources used as raw materials; PENRM = Use of non-renewable primary energy resources used as raw materials; PENRT = Total use of non-renewable primary energy resources; SM = Use of secondary material; RSF = Use of renewable secondary fuels; NRSF = Use of non-renewable secondary fuels; FW = Use of net fresh water

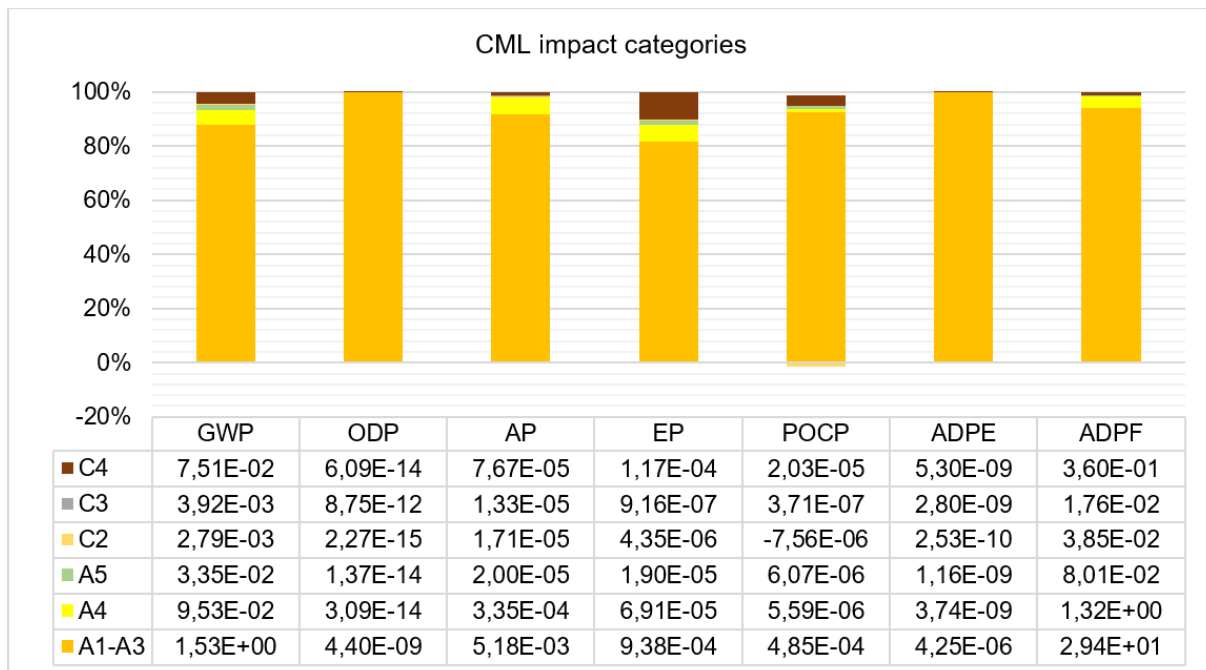
RESULTS OF THE LCA – OUTPUT FLOWS AND WASTE CATEGORIES:

1m² vinyl wallcoverings on woven textile backing

Parameter	Unit	A1-A3	A4	A5	C2	C3	C4	D
HWD	[kg]	1.23E-6	1.04E-8	6.56E-10	2.02E-9	1.01E-10	1.57E-9	-4.07E-11
NHWD	[kg]	4.26E-2	2.11E-5	6.44E-2	3.07E-6	5.23E-3	3.79E-1	-6.37E-5
RWD	[kg]	7.77E-4	1.50E-6	1.21E-6	8.01E-8	7.94E-7	5.66E-6	-1.38E-5
CRU	[kg]	0.00E+0	0.00E+0	1.50E-2	0.00E+0	0.00E+0	0.00E+0	0.00E+0
MFR	[kg]	2.86E-4	0.00E+0	0.00E+0	0.00E+0	0.00E+0	0.00E+0	0.00E+0
MER	[kg]	0.00E+0	0.00E+0	0.00E+0	0.00E+0	0.00E+0	0.00E+0	0.00E+0
EEE	[MJ]	0.00E+0	0.00E+0	6.14E-3	0.00E+0	2.18E-2	1.95E-2	0.00E+0
EET	[MJ]	0.00E+0	0.00E+0	1.43E-2	0.00E+0	4.30E-2	0.00E+0	0.00E+0

Caption: HWD = Hazardous waste disposed; NHWD = Non-hazardous waste disposed; RWD = Radioactive waste disposed; CRU = Components for re-use; MFR = Materials for recycling; MER = Materials for energy recovery; EEE = Exported electrical energy; EEE = Exported thermal energy

6. LCA: Interpretation



The production stage (module A1-A3) clearly dominates all impact categories. The loads caused by the disposal stage (modules C3 and C4) and transports play a subordinate yet not insignificant role. The main environmental impacts are in all categories located in module A1-A3 and there mostly in the production of PVC and woven cotton. In most impact categories, PVC including plasticizers has the greatest influence while cotton is second place. This is the case for the global warming potential (**GWP**), ozone depletion potential (**ODP**), the depletion of fossil resources (**ADPE**) and the photochemical ozone creation potential (**POCP**).

The depletion of fossil fuels (**ADPF**) is also dominated by the PVC whereas the woven cotton plays a minor role and is primarily responsible for the acidification potential (**AP**) and the eutrophication potential (**EP**) instead.

However, also the thermal and electric energy demand in A3 have a noticeable effect on most impact categories.

Transport processes do also affect GWP, AP, EP POCP and ADPF. The main reason is the combustion fuels.

The waste treatment is above all the disposal in module C4 but a smaller fraction is also incinerated. The impact on all categories is relatively small and in general dominated by plastics (PVC) on landfill.

Range of the results

The individual results of the participating companies differ from the average results in the present environmental product declaration. In terms of GWP, the results may be 82% higher or 24% lower than the average for this EPD.

The main reason for the deviations are differences in the grammage of the individual wallcoverings. In addition, there are different materials used as well as varying heat and electricity consumptions depending on the manufacturer.

7. Requisite evidence

Members of the The Global Wallcoverings Association have the following certificates:

- The declared products comply with /EN 15102/.
- According to the (emission) test chamber assessment, which follows the French measurement method /Arrêté du 19/04/11/ the wallcoverings meet the requirements of the test standard /ISO 16000/.
- Optional according to the chamber test which follows the german AgBB (Committee for health-related evaluation of building products)

regulations the wallcoverings meet the requirements of test standard /ISO 16000/.

- Optional compliance with German /RAL-GZ 479/.
- Optional compliance with USA Wallcovering Association W-101 (2013) paragraph 8.1 when tested by California Specification Section 01350 to criteria /CDPH/EHLB/ Standard Method V1.1 (2010).

The certificates and classifications for the various wallcoverings can be obtained from the respective manufacturers.

8. References

ASTM E 84

ASTM E 84:2016: Standard Test Method for Surface Burning Characteristics of Building Materials

ASTM F 793

ASTM F793 / F793M-15, Standard Classification of Wall Coverings by Use Characteristics, ASTM International, West Conshohocken, PA, 2015

ASTM F1141 - 93

ASTM F1141-93(2009), Standard Specification for Wallcovering, ASTM International, West Conshohocken, PA, 2009

BNB

Lifetimes of components for life cycle analyses according to the Bewertungssystem Nachhaltiges Bauen, 2011.

CDPH/EHLB

Standard method for measuring and evaluating chemical emissions from indoor sources using environmental chambers, Version 1.1

CPR

Construction Product Regulation EU

EN 12149:1997

Wallcoverings in roll form - Determination of migration of heavy metals and certain other elements, of vinyl chloride monomer and of formaldehyde release.

EN 12956:1999

Wallcoverings in roll form - Determination of dimensions, straightness, spongeability and washability.

EN 13501-1:2007+A1:2009

Fire classification of construction products and building elements - Part 1: Classification using data from reaction to fire tests.

EN 15102:2007+A1:2011

Decorative wall coverings - Roll and panel form.

EN 233:2016

Wallcoverings in roll form - Specification for finished wallpapers, wall vinyls and plastics wallcoverings.

EN 234:1997

Wallcoverings in roll form – Specification for wallcoverings for subsequent decoration.

EN 235:2001

Wall coverings - Vocabulary and Symbols.

EN 259-1:2001

Wall coverings in roll form - Heavy duty wallcoverings - Part 1: Specifications.

EN ISO 105-B02:2014

Textiles - Tests for colour fastness - Part B02: Colour fastness to artificial light: Xenon arc fading lamp test.

EN ISO 14025:2006

Environmental labels and declarations — Type III

environmental declarations — Principles and procedures; 2009-11.

EN ISO 14044:2006

Environmental management - Life cycle assessment - Requirements and guidelines (ISO 14044:2006).

EN ISO 16000:2006

Indoor air - Part 3: Determination of formaldehyde and other carbonyl compounds in indoor air and test chamber air - Active sampling method.

Indoor air - Part 6: Determination of volatile organic compounds in indoor and test chamber air by active sampling on Tenax TA® sorbent, thermal desorption and gas chromatography using MS or MS-FID.

Indoor air - Part 9: Determination of the emission of volatile organic compounds from building products and furnishing - Emission test chamber method.

Indoor air - Part 11: Determination of the emission of volatile organic compounds from building products and furnishing - Sampling, storage of samples and preparation of test specimens.

Ecoinvent

Database for Life Cycle Assessment, version 2.2. Swiss Center for Life Cycle Inventories, St. Gallen, 2010.

European Waste Catalogue (EWC)

European Waste Catalogue / Ordinance on European List of Wastes

GaBi

GaBi 7.3: Software and Database for Comprehensive Accounting, LBP [Chair for Construction Physics] Universität Stuttgart and thinkstep AG, Leinfelden-Echterdingen, 1992 - 2015.

Institut Bauen und Umwelt e. V.

Product Category Rules for Building-Related Products and Services - Part A: Calculation Rules for the Life Cycle Assessment and Requirements on the Project Report. 2016-08.

Institut Bauen und Umwelt e. V.

PCR Guidance-Texts for Building-Related Products and Services - Part B: Requirements on the EPD for Wallcoverings. 2016-09

ISO 14001:2015

Environmental management systems - Requirements with guidance for use (ISO 14001:2015).

ISO 50001:2011

Energy management systems - Requirements with guidance for use (ISO 50001:2011).

RAL-GZ 479

Wallpapers - Quality assurance

WA-101

WA Quality Standard for Polymer Coated Fabric Wallcovering

Institut Bauen und Umwelt

Institut Bauen und Umwelt e.V., Berlin (pub.):

Generation of Environmental Product Declarations (EPDs);

General Principles

for the EPD range of Institut Bauen und Umwelt e.V. (IBU), 2015/10
www.ibu-epd.de

/ISO 14025/

DIN EN /ISO 14025:2011-10/, Environmental labels and declarations — Type III environmental declarations — Principles and procedures

/EN 15804/

/EN 15804:2012-04+A1 2013/, Sustainability of construction works — Environmental Product Declarations — Core rules for the product category of construction products

	<p>Publisher Institut Bauen und Umwelt e.V. Panoramastr. 1 10178 Berlin Germany</p> <p>Tel +49 (0)30 3087748- 0 Fax +49 (0)30 3087748- 29 Mail info@ibu-epd.com Web www.ibu-epd.com</p>
	<p>Programme holder Institut Bauen und Umwelt e.V. Panoramastr. 1 10178 Berlin Germany</p> <p>Tel +49 (0)30 - 3087748- 0 Fax +49 (0)30 - 3087748 - 29 Mail info@ibu-epd.com Web www.ibu-epd.com</p>
	<p>Author of the Life Cycle Assessment brands & values GmbH Vagtstr. 48/49 28203 Bremen Germany</p> <p>Tel +49 421 696867-15 Fax +49 421 696867-16 Mail info@brandsandvalues.com Web www.brandsandvalues.com</p>
	<p>Owner of the Declaration IGI - The Global Wallcoverings Association Chaussée de Louvain 426 1380 LASNE Belgium</p> <p>Tel +32 (0) 2 720 00 09 Fax +32 (0) 2 720 00 09 Mail info@igiwallcoverings.org Web www.igiwallcoverings.org</p>